



► Why Georgia? Region 2 GMRC Presentation

September 24th, 2025- Cleveland/White County

ABOUT



Georgia's Place in the Southeast US

- Located in the heart of the Southeast, Georgia is home to almost 11 million people, and continuing to grow
 - 8th most populous state
 - Nearly 20% of the entire Southeast population
 - #5 state for net migration
- Georgia's annual projected population growth from 2020 - 2030 outpaces regional and national growth projections

Recent Announcements

FY25 by the Numbers

- 423 Projects Located
- 23,200 Jobs
- \$26 Billion in Capital Investment



DURACELL®



HITACHI



MCKESSON



Mercedes-Benz



trinet

W Wallenius
Wilhelmsen



FOOD PROCESSING



GENERAL MANUFACTURING







Alcon



Boehringer
Ingelheim

Boston
Scientific
Advancing science for life™



CHANGE
HEALTHCARE
Part of Optum®

MIMEDX

INTUITIVE

Johnson & Johnson

 **MEISSNER**

AVANOS*





TOYOTA INDUSTRIES CORPORATION

LANZAJET



LG Energy Solution

FIREARMS



A background image of two scientists in a laboratory setting, both wearing safety goggles and white lab coats. They are looking down at a piece of scientific equipment, possibly a microscope or a sample holder. The image is overlaid with a semi-transparent blue gradient that covers the entire frame. The text 'Workforce & Education' is written in white, bold, sans-serif font in the lower-left quadrant of the image.

Workforce & Education

WORKFORCE & EDUCATION



Median Age

36.9 years old,
younger than the US
Median of 38.2



Labor Force

5.3 million
2nd Largest in
Southeast



Major MSA

Atlanta is nation's
8th largest
Metropolitan
Statistical Area



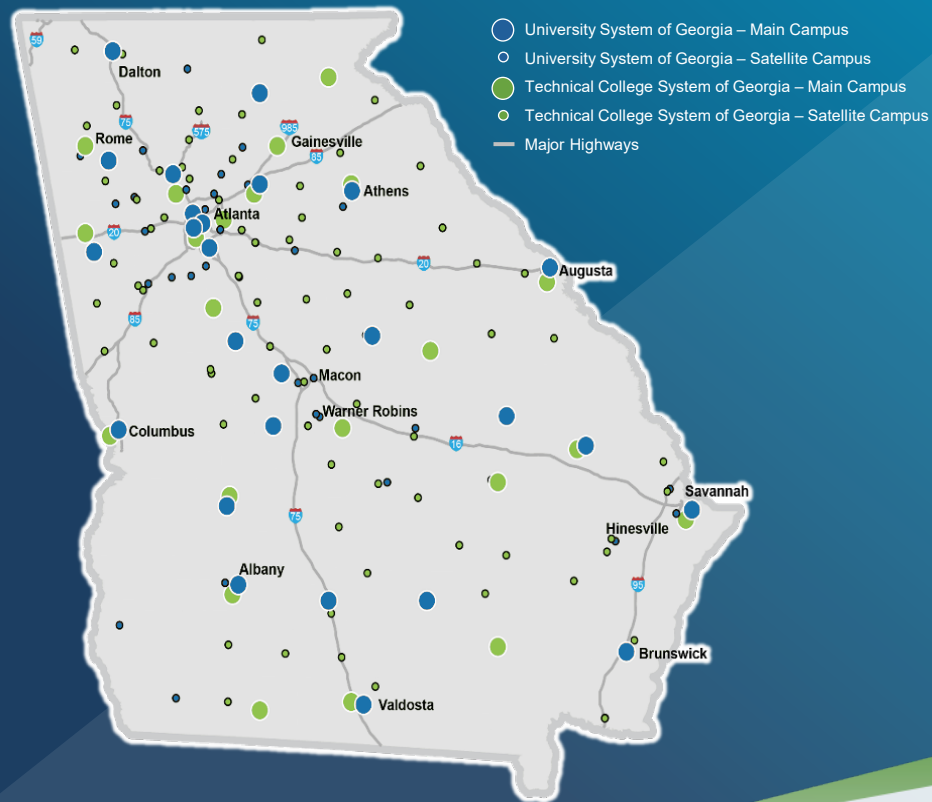
Educational Attainment

42% Associates
Degree or Higher

Post Secondary Education in Georgia

95,000+

Degrees Issued Annually



Universities and Colleges within 250-Mile Radius



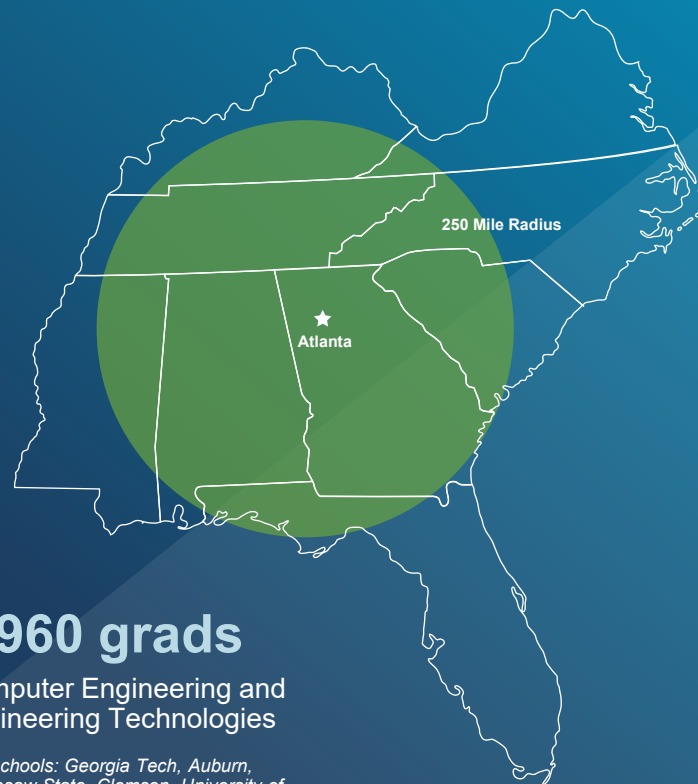
1.9M

Students in 446 2-year, 4-year and university level institutions*



24,440

Select IT & Engineering Degrees Awarded (2021)



22,000 grads

Computer and Information Sciences including Computer Programming

Top Schools: Georgia Tech, University of North Carolina – Charlotte, Kennesaw State, University of the Columbians Georgia State

1,320 grads

Management Information Systems

Top Schools: University of Georgia, Florida State, University of Alabama, University of Alabama - Birmingham

1,960 grads

Computer Engineering and Engineering Technologies

Top Schools: Georgia Tech, Auburn, Kennesaw State, Clemson, University of Alabama in Huntsville

*12 month unduplicated headcount

TCSG Overview and Accolades

22

Colleges

88

Campuses strategically
located across the state

600

Associate degrees and
certificate programs

99%

Placement rate

Hope Career Grant

- Provides free tuition training in 18 “high-demand” occupations
- Students are not required to graduate from high school with a specific GPA to be eligible for the Hope Grant.
- The HOPE Career Grant is available to HOPE Grant-qualified students who enroll in select majors specifically aligned with industries in which there are more jobs available in Georgia than there are skilled workers to fill them.

HOPE CAREER GRANT PROGRAM AREAS

- Automotive Technology
- Aviation Technology
- Bioscience Technologist
- Certified Engineer Assistant
- Computer Programming
- Commercial Truck Driving
- Construction Technology
- Early Childhood Care and Education
- Electrical Lineman Technology
- Health Information Specialist
- Industrial Maintenance
- Logistics/Transportation Technology
- Movie Production/Set Design
- Precision Manufacturing
- Welding and Joining Technology

Georgia Quick Start

Comprehensive, customized workforce training at no cost to qualified companies

- Job-specific training meets company's needs
- Collaborative development process ensures company satisfaction
- In-house teams provide video, photography, animation and technical illustrations

#1

Consistently ranked #1 workforce development program in the U.S.

1.3M+

Georgians trained



“Employees were 240% above their production targets on day one. That just goes to show how well prepared and skilled our team was.”

Bob Potts, Director of Continuous Improvement for Rinnai America



“We have received outstanding support through our partnership with Quick Start, which is producing a well-trained workforce for our startup operation.”

Tom Gray, Vice President Of Operations, SKC



A man in a call center wearing a headset and safety vest, looking at a computer monitor. The background shows other people working at computers in a busy office environment. The image is overlaid with a blue gradient and a white diagonal line.

Logistics & Transportation

LOGISTICS & TRANSPORTATION



AIR

The world's busiest airport, Hartsfield-Jackson Atlanta International

Commercial service from 8 additional airports

104 public-use airports in the state



SEAPORTS

Savannah: Fastest growing and 3rd busiest U.S. container gateway



ROADS

1,200 miles of interstate highway
20,000 miles of federal and state highways



RAIL

Largest rail network in the SE:
5,000 miles of rail

Access to Market



TRAVEL BY AIR



80% of U.S. markets within
a 2-hour flight time



TRAVEL BY RAIL



80% of U.S. markets within
3-4 days of transit



TRAVEL BY TRUCK



80% of U.S. markets within
a 2-day drive

Hartsfield-Jackson Atlanta International

21

YEARS
WORLD'S BUSIEST AND
MOST EFFICIENT AIRPORT

150

U.S. DESTINATIONS

75+

INTERNATIONAL
DESTINATIONS
IN 50 COUNTRIES

2,700

ARRIVALS AND
DEPARTURES ON
AVERAGE DAILY



Georgia Ports

PORT OF SAVANNAH

- Largest Single Container Terminal in North America
- Most Westerly Major Container Port On The Eastern Seaboard

PORT OF BRUNSWICK

- Nations busiest Ro/Ro port for auto and heavy equipment
- #1 for Automotive Exports

INLAND PORTS

- Provide Fast and Efficient Cross-state Delivery
- Current capacity to move 75,000 containers a year at the Appalachian Regional Port



Blue Ridge Connector

104 acres • Annual capacity 200k lifts

Rail provider Norfolk Southern • Complete Spring 2026



INLAND PORTS

Blue Ridge Connector

104 acres • Annual capacity 200k lifts

Rail provider Norfolk Southern • Complete Spring 2026



Georgia Infrastructure Investments

\$1.5B

Transportation
Infrastructure
Investment

\$593M

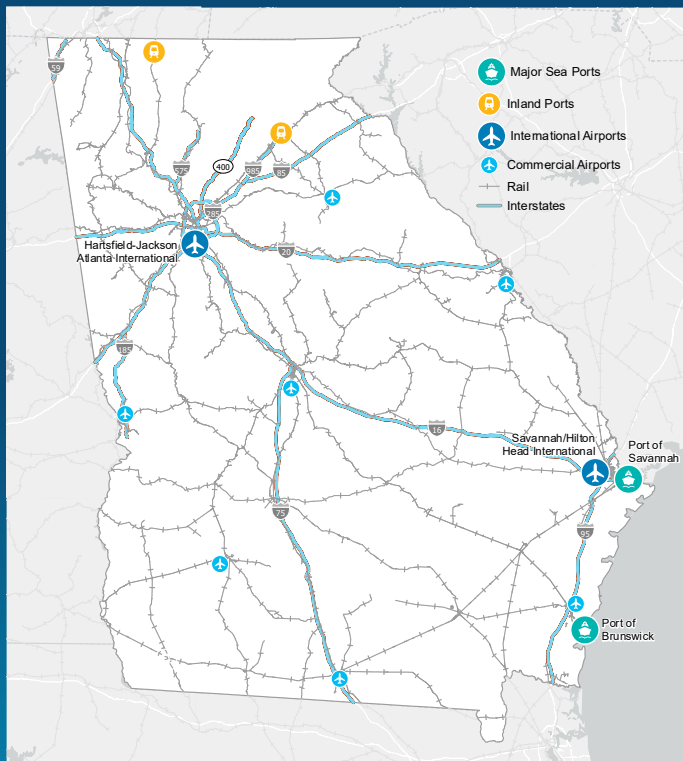
Capital Construction
Funding

\$250M

State Funding
Designated for Every
City and County to
Improve Roads

\$500M

New Freight
Program



Distribution and Warehousing

- 85% of the world's top 3PLs
- 65+ cold chain facilities
- 189 million cubic square feet of cold storage space
- 80% of global public refrigerated warehouse companies

A woman with blonde hair and glasses, wearing a denim shirt and a yellow scarf, stands in a workshop. The background is filled with various tools, a sign that says 'SERVICES', and a large satellite dish. The image has a blue overlay with a diagonal split.

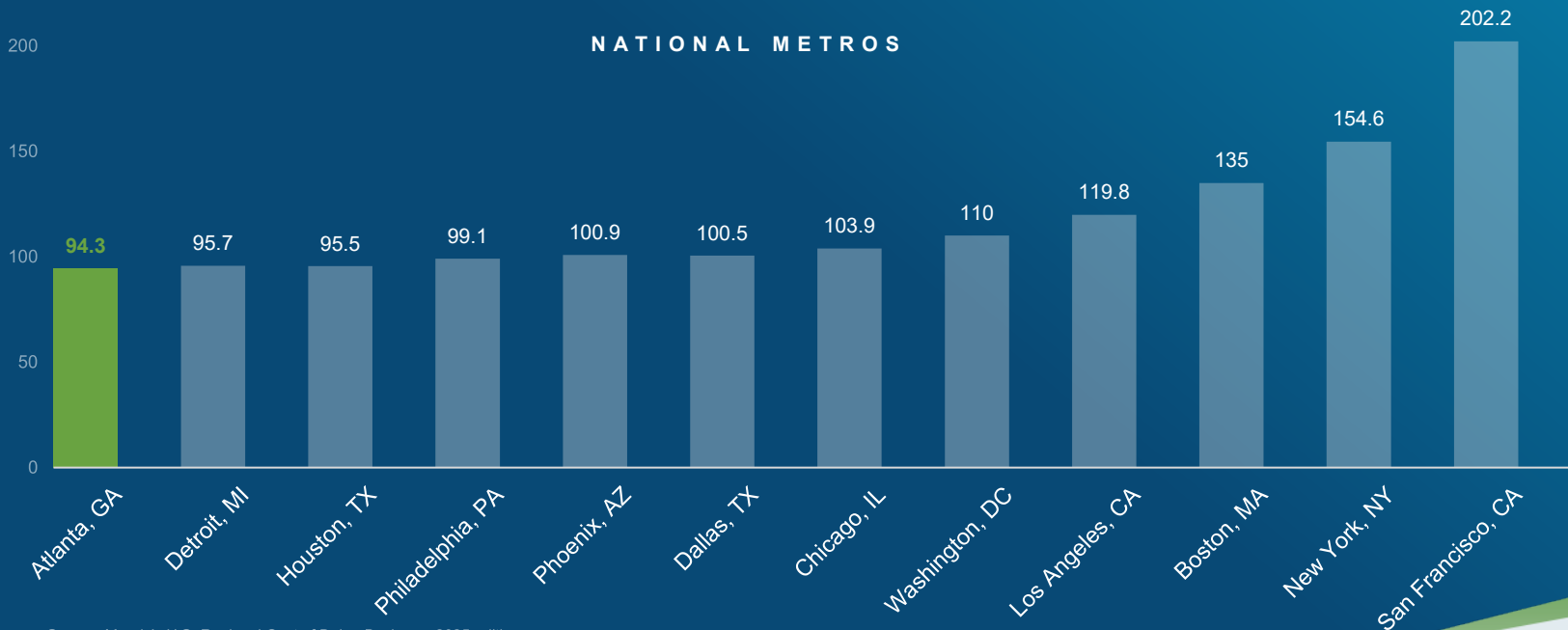
Business Climate

Business-friendly Environment

- Georgia has a AAA bond rating from all three agencies
- Fully-funded rainy day fund
- State corporate income tax, 5.19%
- Single factor apportionment based exclusively on gross receipts in Georgia
- Right-to-work and employment-at-will state
- Franchise tax rate – max \$5,000 annually

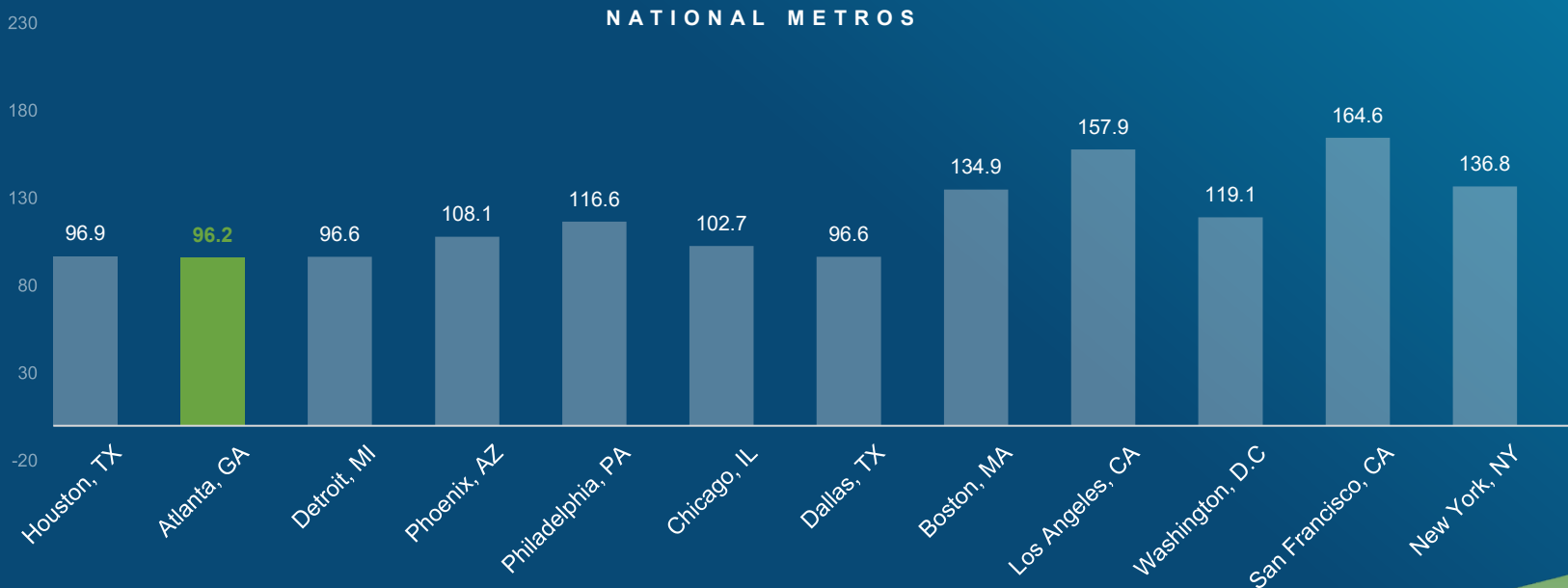


Cost of Doing Business Index



Source: Moody's U.S. Regional Cost of Doing Business, 2025 edition

Affordable Cost of Living



Source: The Council for Community and Economic Research (C2ER) Cost of Living Index, 2024 Annual



Quality of Life

"From the North Georgia mountains to the Golden Isles and every charming town in between, we're sure you'll find a reason to keep Georgia on your mind."

- Governor Brian P. Kemp

Who We Are

The Georgia Department of Economic Development (GDEcD) is the marketing and sales arm of the State of Georgia.



Center of
Innovation



Council for
the Arts



Film



Global
Commerce



International
Relations



Tourism



Trade

INTERNATIONAL OFFICE LOCATIONS





DRIVING GROWTH. CREATING JOBS. BUILDING TOMORROW.

GEORGIA'S ECONOMY IN ACTION

423

FACILITIES

\$26.3B

INVESTMENT

23,200

NEW JOBS



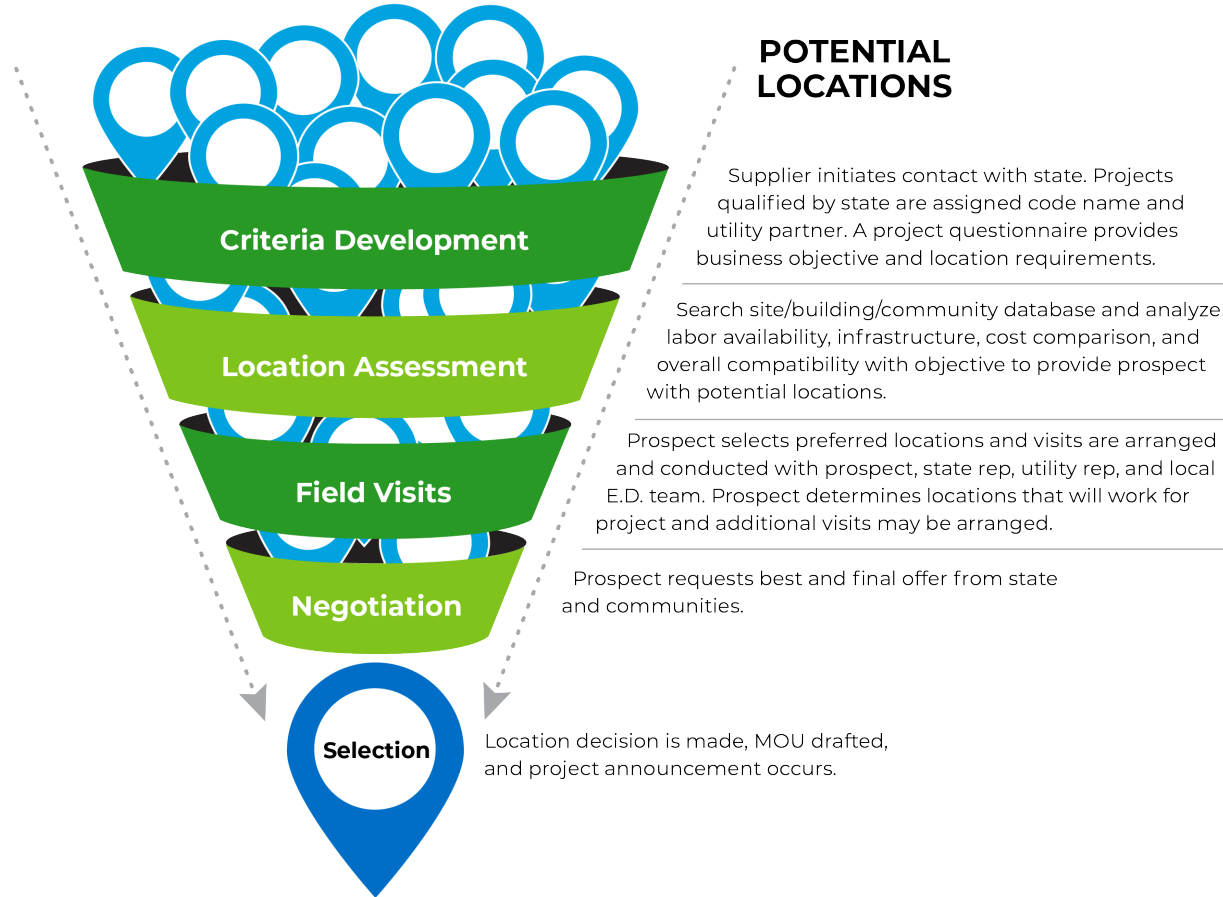
NOTABLE PROJECTS



Mercedes-Benz



GDEcD Project Process



Five Year Snapshot

Fiscal Year	Locations	New Jobs	Investment
2021	377	32,355	\$10,950,419,532
2022	359	51,095	\$21,262,468,279
2023	428	38,375	\$24,223,767,670
2024	437	27,678	\$21,096,312,079
2025	423	23,223	\$26,352,798,113

Overview of Project Type

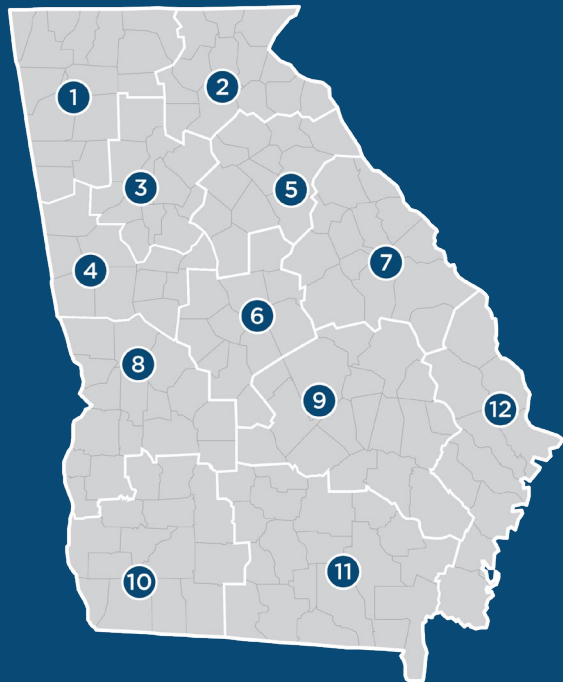
METRO ATLANTA COMPARED TO NON METRO:

	Locations	%	New Jobs	%	Investment	%
Outside Region 3	326	77%	14,624	63%	\$18,682,982,451	71%
Region 3	97	23%	8,599	37%	\$7,669,815,662	29%

NEW LOCATIONS COMPARED TO EXPANSIONS:

	Locations	%	New Jobs	%	Investment	%
Expansion	311	74%	10,626	46%	\$10,342,113,493	39%
New Location	112	26%	12,597	54%	\$16,010,684,620	61%

Growth by Regions



Region	Locations	New Jobs	Investment
Region 1	37	3,263	\$2,529,062,400
Region 2	21	1,440	\$402,350,000
Region 3	97	8,599	\$7,669,815,662
Region 4	53	4,363	\$7,753,401,664
Region 5	13	472	\$3,576,590,500
Region 6	31	893	\$1,085,323,344
Region 7	31	506	\$135,849,000
Region 8	21	941	\$496,639,001
Region 9	10	437	\$101,500,000
Region 10	46	636	\$696,224,000
Region 11	37	607	\$760,300,300
Region 12	26	1,066	\$1,145,742,242

Foreign Direct Investment

27% of all projects were from foreign companies (115 total)

28% of all jobs (6,533) and 11% of investment (\$3.02B) were from FDI projects

Country	Projects	New Jobs	Investment
South Korea	18	870	\$787,492,240
Japan	17	772	\$671,060,501
Germany	16	898	\$149,828,000
Southeast Asia	10	1093	\$165,600,000
Ireland	7	704	\$69,915,001
United Kingdom	7	516	\$40,050,000
France	5	179	\$4,000,000
Canada	4	144	\$580,602,344
Switzerland	4	342	\$122,021,578
Belgium	4	49	\$5,120,000

GEORGIA'S TARGET INDUSTRIES



Aerospace



Agribusiness



Automotive



Chemical
Manufacturing



Contact Centers/
Customer Service



Cybersecurity



Data Centers



Sustainability



Defense



Energy



EV Battery
Manufacturing



Film



Financial
Technology



Food & Bev
Processing



General
Manufacturing



Headquarters



IT/Technology



Life Sciences



Logistics/
Warehouse



Recycling of
precious metals



Solar Energy



Wood
Processing/
Forestry



Metal
Stamping/
Fabrication

Agribusiness

#1

Industry in Georgia

\$74B

Yearly Economic
Impact

9.9M

Acres of Farmland

#1

United States for
Broilers, Hatching
Eggs & Peanuts

399,200

Georgians
Employed

1,586

Food Processing
Facilities

178M

Cubic Feet
of Cold Storage

#2

In Cotton,
Peanuts, Pecans
& Watermelon

#3

In Bell Peppers,
Blueberries,
Cucumbers,
and Peaches

INDUSTRY

Life Sciences

#2

Biomedical
Engineering
Program

78,000+

Life Sciences
Employees

4,000+

Life Sciences
Organizations

167,000+

Workers in
Tech-Related
Fields

JOB CREATION

- Quality Jobs Tax Credit
- Mega Project Tax Credit
- Job Tax Credits
 - Port Tax Credit Bonus
 - Life Sciences Manufacturing Tax Credit Bonus

DISCRETIONARY GRANTS

- Potential Grants for:
 - Land Acquisition
 - Site Preparation
 - Building Construction
 - Equipment Costs

COMMUNITY INCENTIVES

- Potential Opportunities for:
 - Property Tax Abatement
 - Land at Reduced Cost
 - Permitting Fee Waivers
 - New and Improved Infrastructure
 - Site Preparation
 - Cash Grants

ADDITIONAL SUPPORT FOR GROWTH

- Quick Start Training Program
- R&D Tax Credits
- Investment Tax Credit
- Child Care Tax Credits

SALES & USE TAX EXEMPTIONS

- Energy Used in Manufacturing
- Manufacturing Machinery & Equipment
- Repair to Industrial Machinery
- Raw Materials & Packaging

Job Tax Credit Map

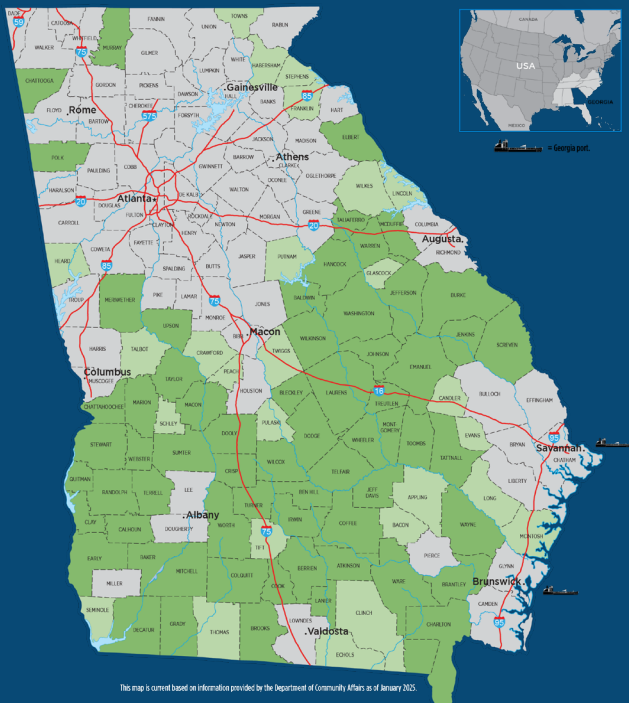


TIER	JOB TAX CREDIT \$ (FOR 5 YEARS)	MIN. NEW JOBS	CREDIT ALLOWANCES	CARRY FORWARD
1	\$4,000*	2	100% of tax liability - excess to withholding up to \$3,500 per job	5 years
2	\$3,000*	10	100% of tax liability	5 years
3	\$1,750*	15	50% of tax liability	5 years
4	\$1,250*	25	50% of tax liability	5 years

SPECIAL ZONE	JOB TAX CREDIT \$ (FOR 5 YEARS)	MIN. NEW JOBS	CREDIT ALLOWANCES	CARRY FORWARD
MZ/OZ	\$3,500	2	100% of tax liability - excess to withholding	5 years
LDCT	\$3,500	5	100% of tax liability - excess to withholding	5 years

INCENTIVES

Rural Designations



QJTC COUNTY DESIGNATIONS

TIER & STATUS	MINIMUM NEW JOBS	TIME PERIOD TO CREATE JOBS
Tier 1, Rural	10	12 months
Tier 2, Rural	25	12 months
Remaining Counties	50	24 months

Team Georgia Assembles



Camera Ready Communities

Georgia's Camera Ready Communities program connects film and TV productions with skilled county liaisons across the state to provide local expertise and support.



Nominations are OPEN!!!

FULLY CUSTOMIZED
HEAD & BODY

Full Custom Head & Body

Most Popular!

FROM
\$119

Go!



Site Selection Priorities

For Immediate Release

Wednesday, September 24, 2025

Gov. Kemp: Georgia No. 1 for Business for 12th Straight Year

ATLANTA – Governor Brian P. Kemp, in conjunction with the Georgia Department of Economic Development (GDEC), today announced that the state has been recognized as the No. 1 state for business by [Area Development magazine](#) for the 12th year in a row, marking an unmatched record of success and consistency in economic development.

"For 12 straight years, site selectors who decide where companies invest have voted Georgia as the 'Top State for Business' in this annual poll from the leading publication for these decisionmakers," **said Governor Brian Kemp.** "While we've earned this ranking for over a decade, it's by no means guaranteed. It is a reflection of the sustained commitment we have to excellence and a team approach to economic development. I want

"Today, it's about execution: how quickly and reliably a state can align land, labor, logistics, and leadership behind a fast-moving project."

Area Development Magazine

2025's Top States for Business: How the Winners Are Outpacing the Rest - Area Development

Top States for Doing Business Overall

State	Rank
Georgia	1
South Carolina	2
Texas	3
North Carolina	4
Ohio	5

\$18 Million Awarded in State Grants to Assist Community Economic Development Initiatives

Governor Kemp Announces Second Round of Rural Site Development Grants



ATLANTA – June 18, 2025 – Governor Brian P. Kemp announced today the second round of grants in the OneGeorgia Authority's Rural Site Development Initiative. This program enables Georgia's rural communities to identify, assess, and develop new, ready-for-development industrial sites, further growing the state's capacity for economic growth. Eligible activities for use of grant funds include, but are not limited to, site studies, land grading, and other essential community infrastructure efforts that support site development.

"By investing in site development, communities are investing in their long-term health," said Georgia Department of Economic Development Commissioner Pat Wilson. "There is no better way to change a life for the better than creating an opportunity for a job. This program will help us continue to bring economic opportunity and prosperity into our communities, providing generational change for the better."

Thank You

Media inquiries? Jessica Atwell, jatwell@georgia.org